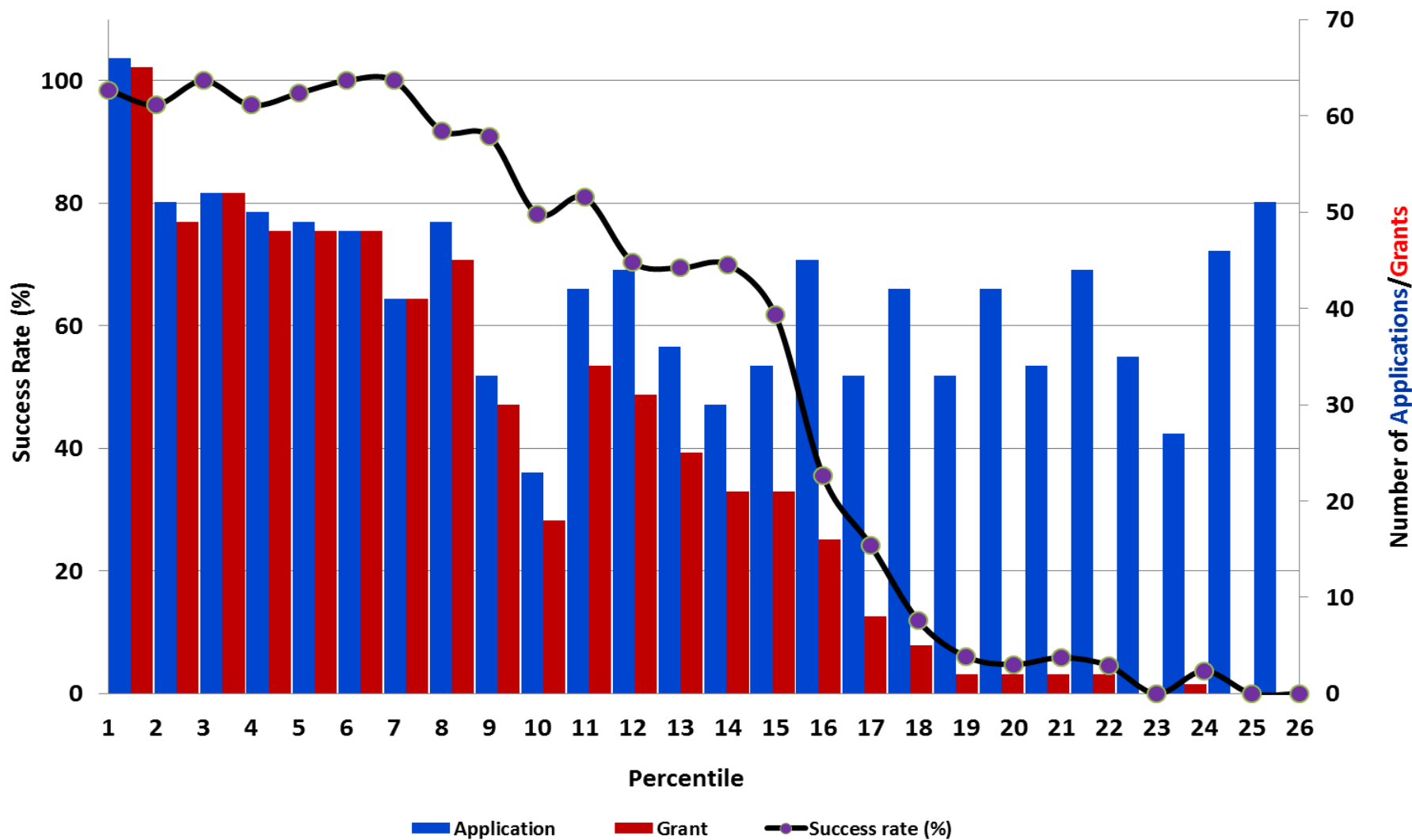


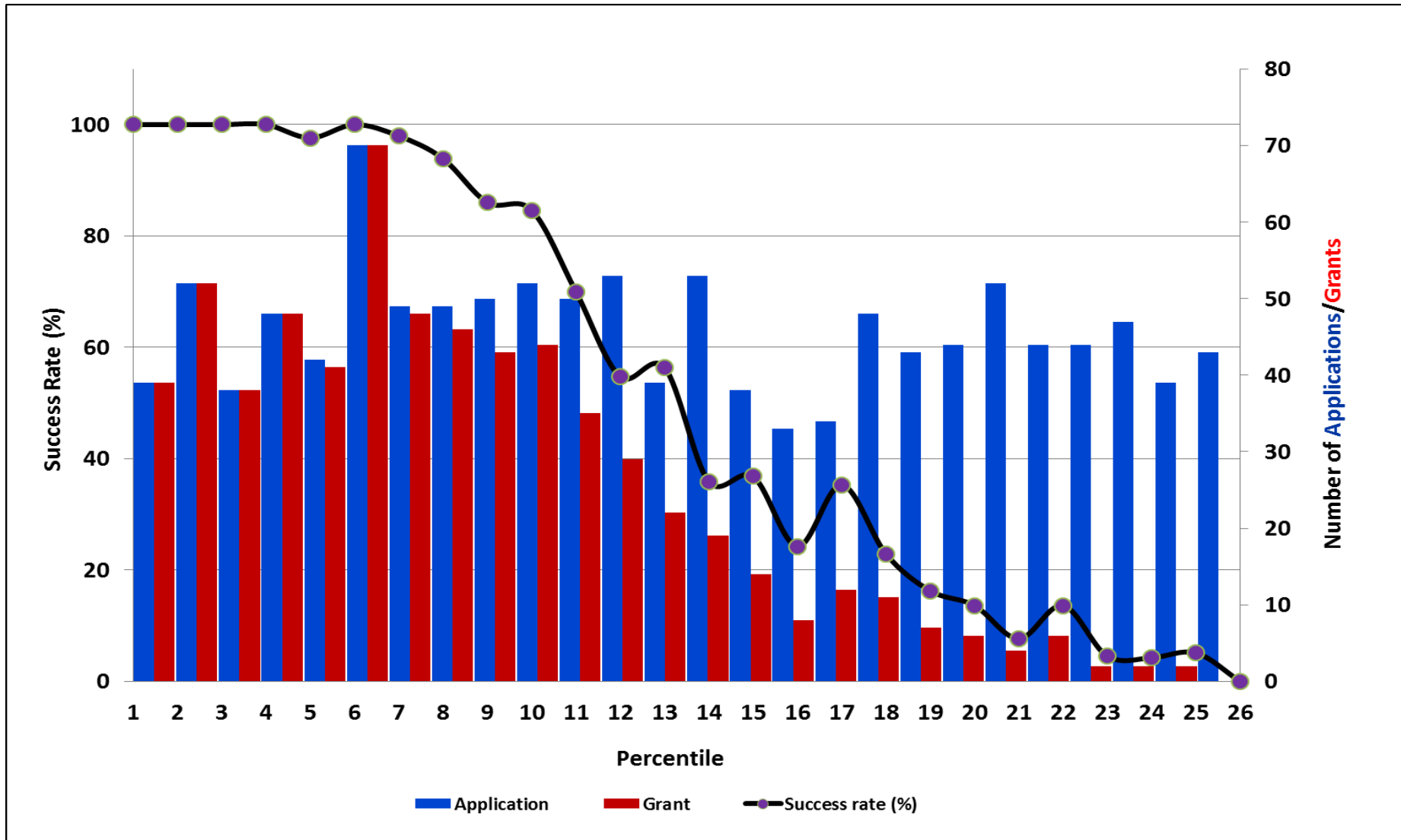
NCI FY2012: "Percentiled" R01 Applications, Awards, and Success Rates

All Investigators: Experienced, New and Early Stage



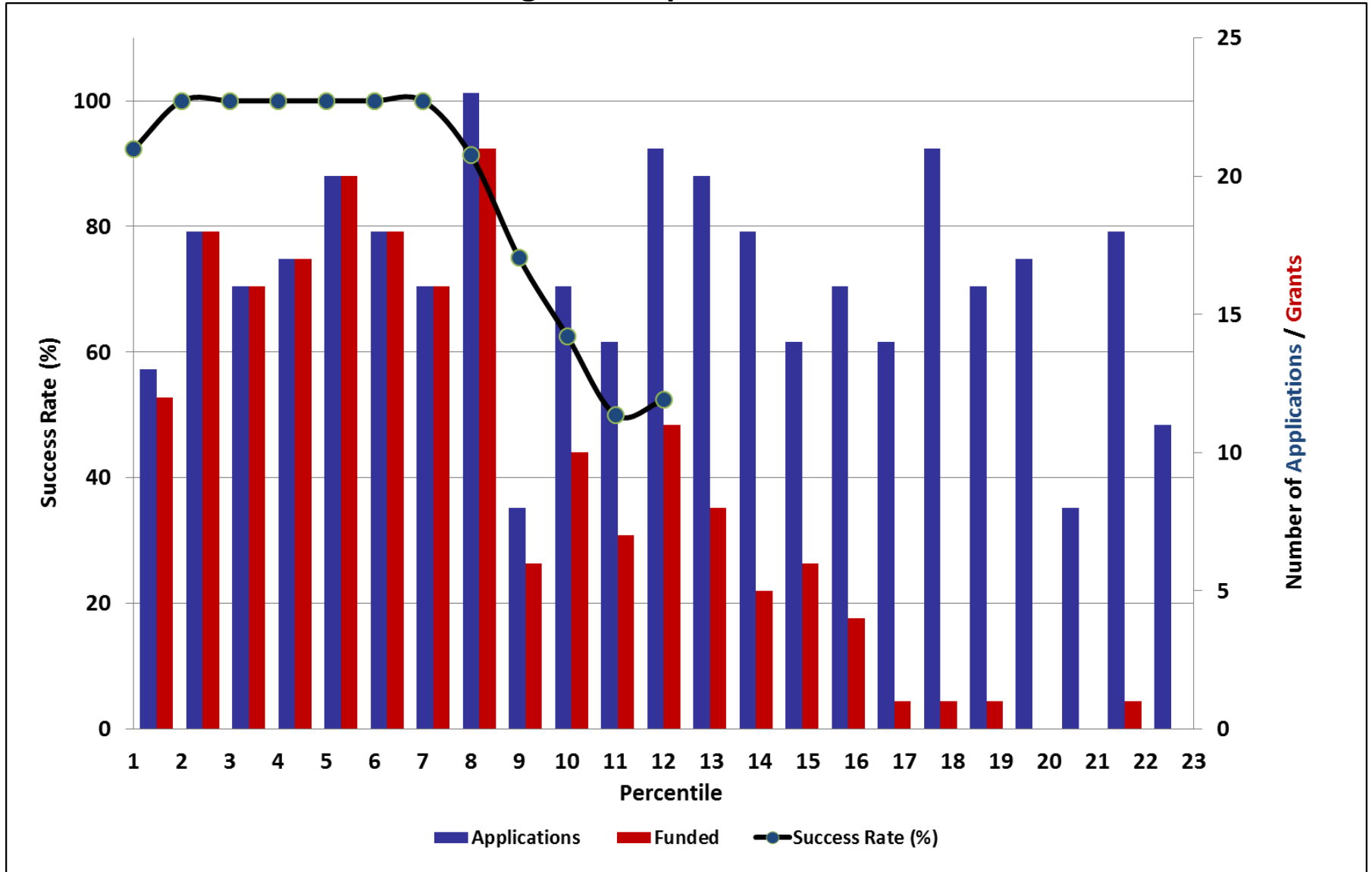
NCI FY2011: "Percentiled" R01 Applications, Awards, and Success Rates

All Investigators: Experienced, New and Early Stage



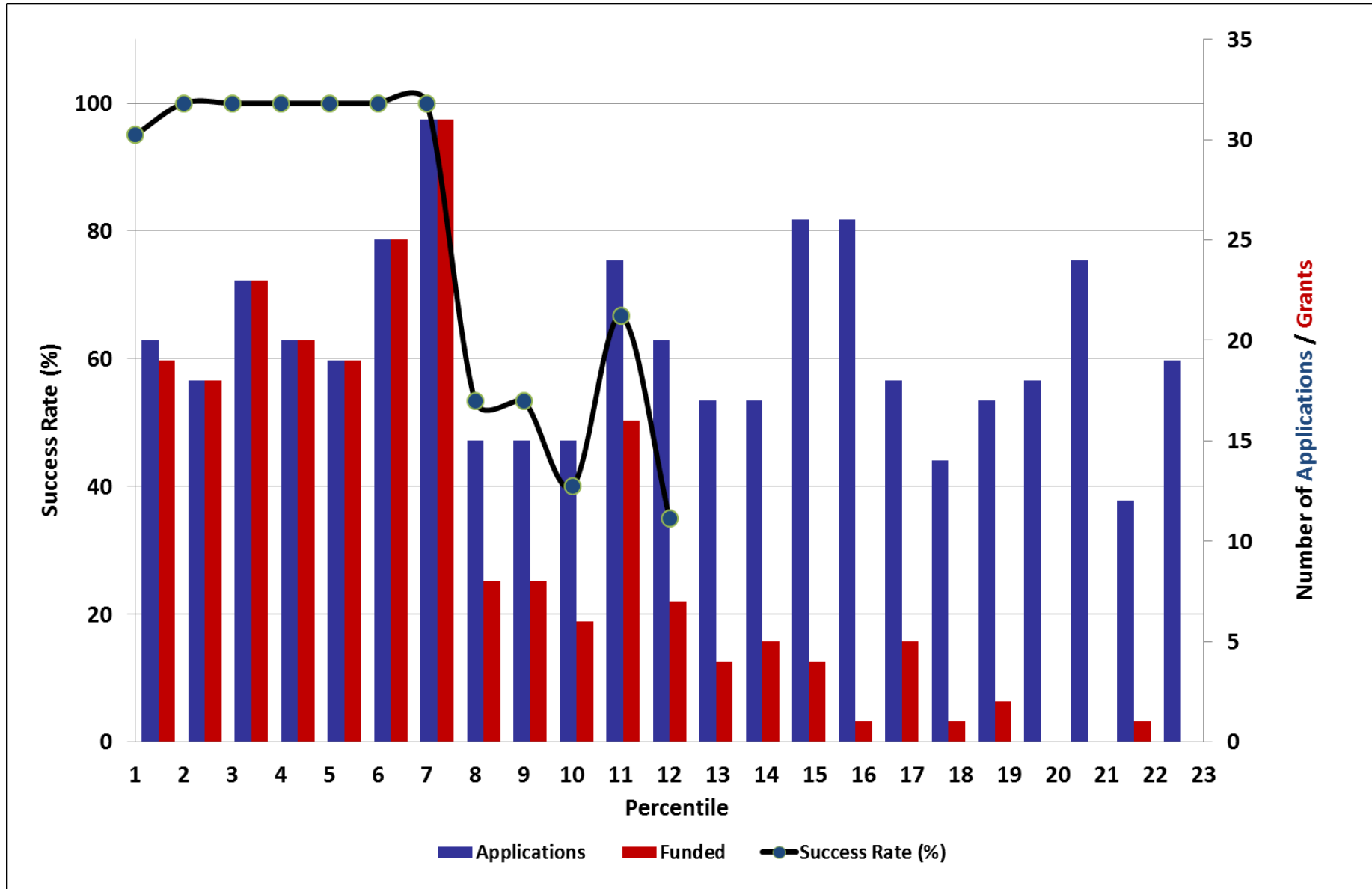
NCI FY2012: R21 Applications, Awards, and Success Rates

All Investigators: Experienced and New



NCI FY2011: R21 Applications, Awards, and Success Rates

All Investigators: Experienced and New



Fiscal Year 2012: Success Rates (investigator-initiated R01's and R21's)

	Total Applications	Number With Percentiles Of 25 or better	Number With Percentiles Of 10 or better	Funded	Success Rate
R01 – All Investigators	4,143	1,029	462	618	15%
Experienced Investigators - Total	2,849	777	356	466	16%
Type 1	2,345	556	245	316	13%
Type 2	504	221	111	150	30%
New Investigators	1,294	252	106	152	12%
Early Stage Investigators	564	129	59	86	15%
R21 – All Investigators	1,911	411	165	200	10%
Experienced Investigators	751	194	73	87	12%
New Investigators	1,160	217	92	113	10%

Fiscal Year 2012 vs. 2011: All Competing Research Project Grants

FY 2012

FY 2011

	Funded	Success Rate	Funded	Success Rate
R01 – Unsolicited	620	15%	655	15%
R21 – Unsolicited	200	11%	223	10%
R03	101	20%	72	17%
Solicited R01/R21	88	8%	68	14%
*Other RPGs	78		88	
Total Competing RPGs:	1,085	14%	1,106	14%

*Other RPGs include R03, R15, P01, U01 and UM1.